

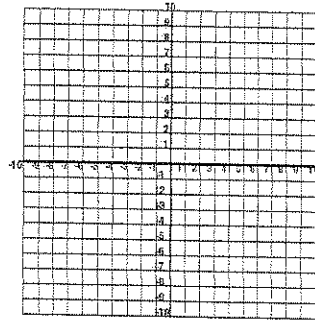
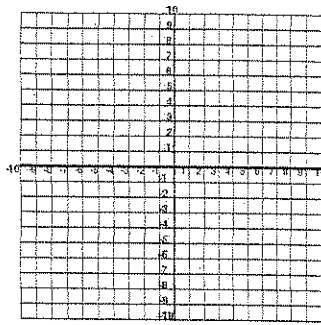
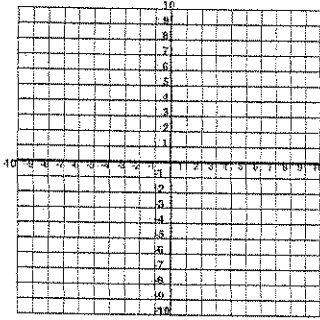
## Geometry Worksheet 3-6

Find the slope between the following points.

- 1) (2,4) and (5,9)                      2) (-3,7) and (2,0)                      3) (4,-7) and (13,5)

Graph the following linear equations.

- 4)  $y = 3x - 2$                       5) Slope =  $-\frac{1}{4}$ , through (-2, 3)                      6)  $4x + 2y = 8$

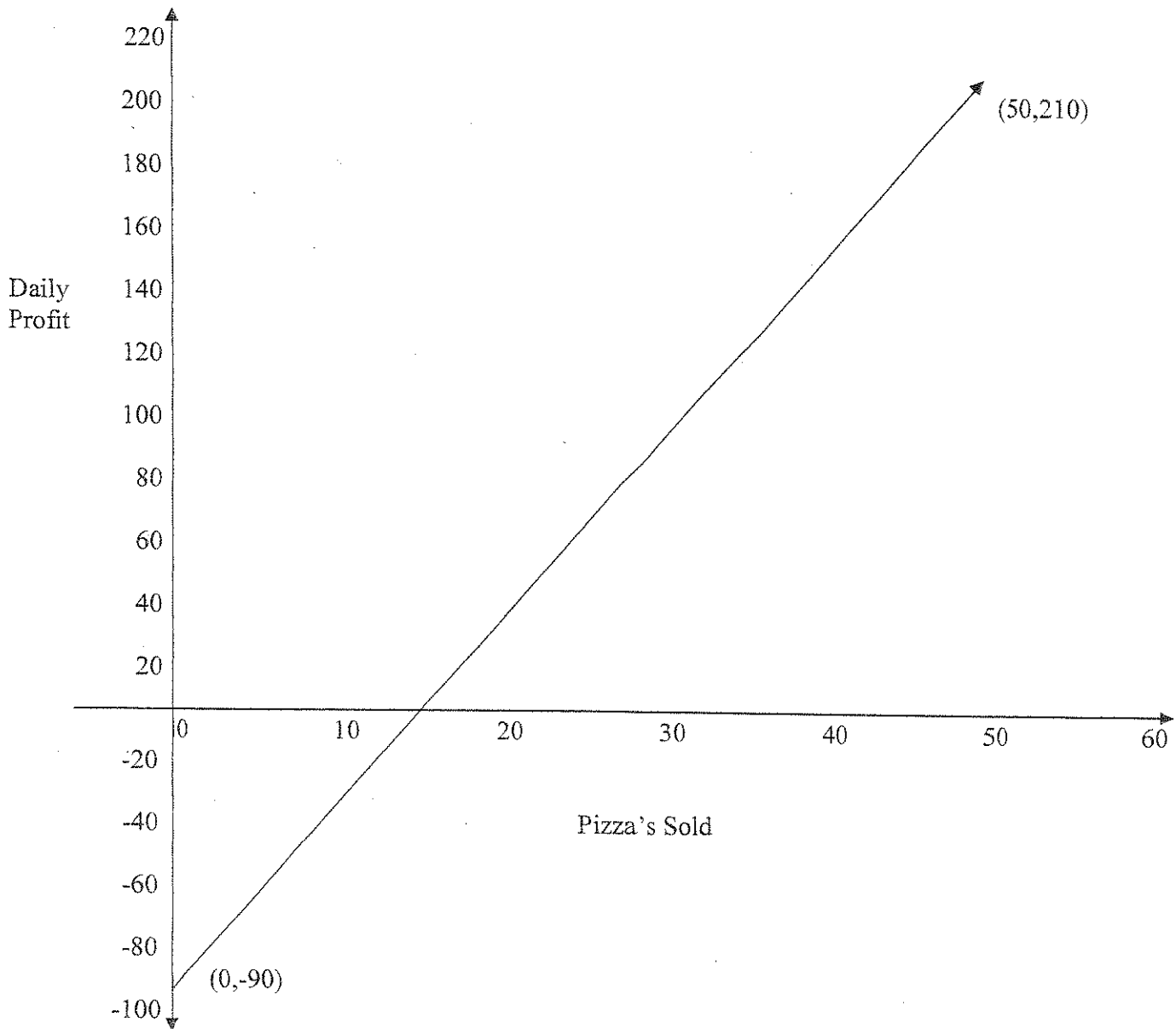


Write the equation for the following lines in slope-intercept form.

- 7) Slope = 3, y-intercept = -5                      8) Slope =  $-\frac{2}{3}$ , y-intercept = 13
- 9) Slope =  $\frac{1}{2}$ , through point (6,7)                      10) Slope = 3, through point (2,-6)
- 11) Through points (4,1) and (6,4)                      12) Through points (1,3) and (2,5)
- 13) Parallel to  $y = 2x - 4$                       14) Perpendicular to  $y = -\frac{1}{2}x - 7$   
y-intercept = -1                      y-intercept = -1

15)

Polly's Pizza Place



- A) Write the equation for Polly's daily profit in slope-intercept form.
- B) Write the X and Y intercepts and describe their importance to the graph and Polly.
- C) Give the slope and describe it's importance to the graph and Polly.
- D) Use your equation to predict how much Polly will make if she sells 30, 40, and 60 pizzas in a day.
- E) Why is it not important to continue the graph to the left of the Y-axis?