

10/21

Name

Key

Trig Proficiency Check Graphing (2.4)

Make sure to label the quarter values on the x-axis and any values on the y-axis.

1. Write the equation for a sine function with amplitude of 7, period of 3π , and a vertical shift up 4 units. Then graph it.

$$A=7$$

$$D=4$$

$$T=3\pi$$

$$3\pi = \frac{2\pi}{|B|}$$

$$B = \frac{2\pi}{3\pi} = \frac{2}{3}$$

$$y = 7 \sin\left(\frac{2x}{3}\right) + 4$$

2. Draw one cycle of the graph $y = -2 \cos x - 5$

$$f(x) = \cos x$$

$$A=2$$

$$T=2\pi$$

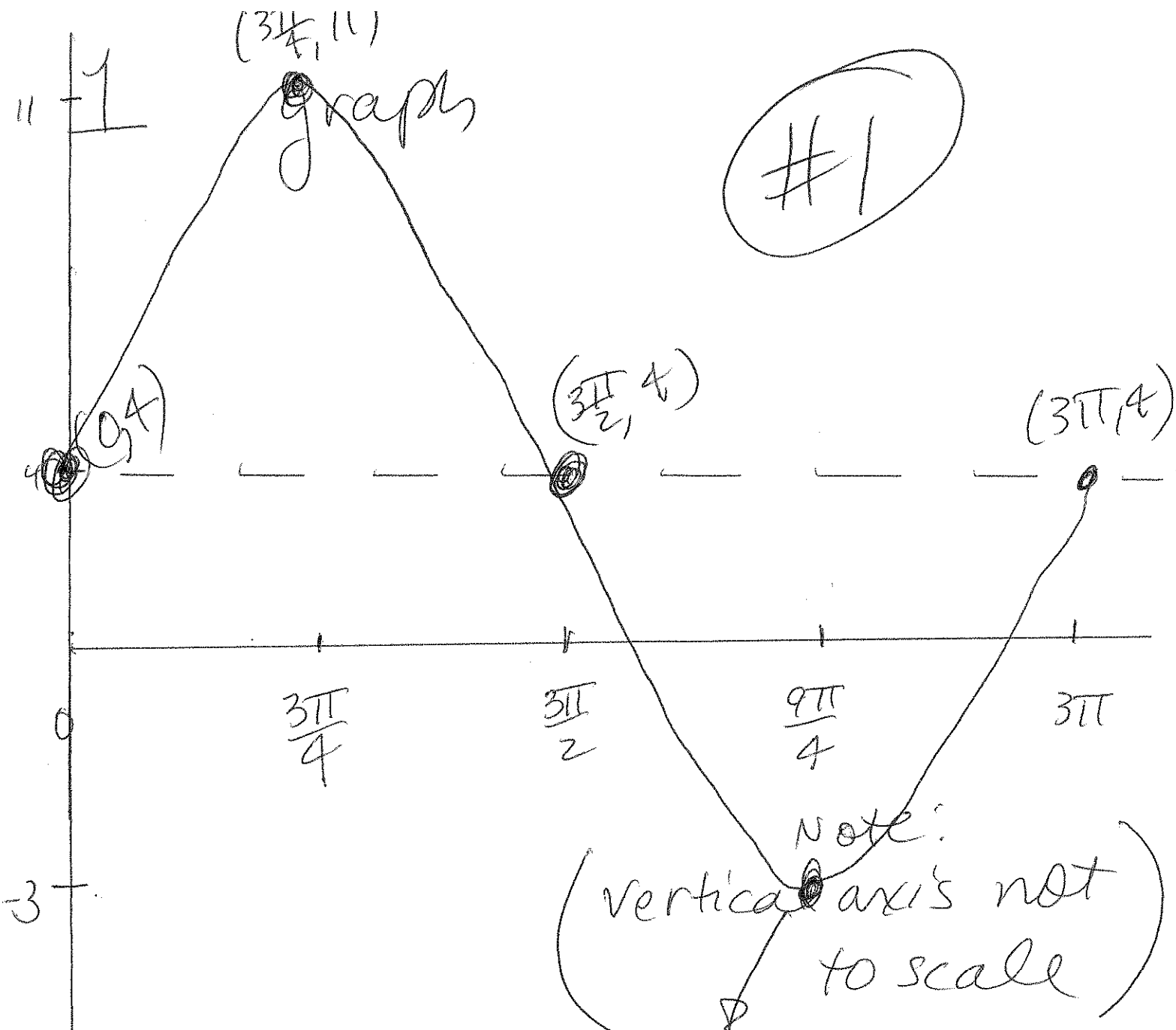
$$D=-5$$

FYI:

$$y = -2f(x) - 5$$

- Reflection over x-axis
- Vertical stretch by a factor of 2
- Vertical shift down 5

Graph on other page.



$(\frac{9\pi}{4}, 3)$ over $[0, 3\pi]$

Graph $[0, 3\pi]$

#2

$$y = -2 \cos x - 5$$

Graph is
not to scale
on
vertical
axis.

